

MODEL # CIMR-ZU	VOLTAGE THREE-PHASE (VAC)	OUTPUT CURRENT (A)	WEIGHT LBS (Kg)	HEAT LOSS (W) (Fc=SEE NOTE)		
				INT	EXT	TOT
2A0143FXX	200/240	143	143 (65)	307	1191	1498
2A0169FXX		169	150 (68)	365	1447	1812
2A0211FXX		211	154 (70)	471	1753	2224
2A0273FXX		273	161 (73)	625	2378	3003
4A0156FXX	380/480	156	161 (73)	535	1929	2464
4A0180FXX		180	167 (76)	621	2342	2963
4A0240FXX		240	174 (79)	790	2863	3653

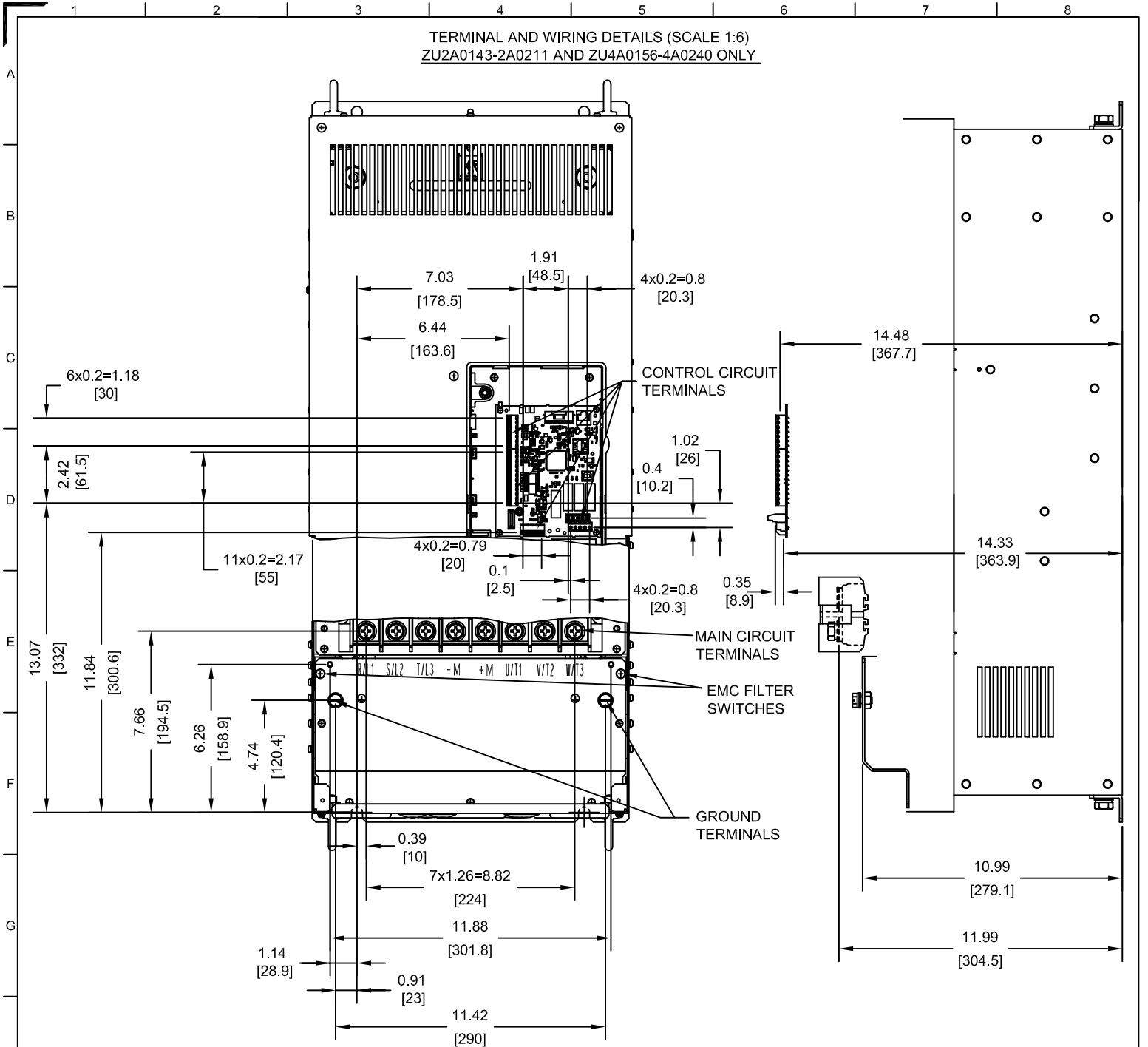
NOTES:
 XX DENOTES AA-ZZ
 INT=INTERNAL COMPONENTS
 EXT=EXTERNAL HEATSINK
 TOT=TOTAL

CARRIER FREQ. IS SET TO:
 Fc=5kHz FOR MODELS 2A0143, 2A0169, 2A0211, 2A0273, 4A0156 AND 4A0180
 Fc=4kHz FOR MODEL 4A0240

FOR ADDITIONAL DETAILS AND SPECIFICATIONS, CONSULT MANUAL

TOLERANCES / REFERENCES: YASKAWA THIS DOCUMENT AND INFORMATION CONTAINED IN IT ARE CONFIDENTIAL, AND CANNOT BE COPIED OR DISCLOSED IN WHOLE OR IN PART WITHOUT THE EXPRESS WRITTEN CONSENT OF YASKAWA AMERICA, INC.	DRAWN: J. MATTAS	DATE: 8-30-11	TITLE: Z1000 DIMENSION DRAWING		
	CHECKED: J. PIOTROWSKI	DATE: 10-21-11	FRAME SIZE 6		
	TECH: J. BORJA	DATE: 9-23-11	NEMA TYPE 1 ENCLOSURE		
	APPROVED: J. CAIRO	DATE: 10-17-11	SIZE: A	REVISION: R00	PAGE: 1 of 4
UNITS: IN [mm]	SCALE: 1:12	ORIGINAL DESIGN: -	DATE: -	DD.Z1K.FR6.N1	

TERMINAL AND WIRING DETAILS (SCALE 1:6)
ZU2A0143-2A0211 AND ZU4A0156-4A0240 ONLY



TERMINAL AND WIRE SPECIFICATIONS FOR
MAIN CIRCUIT AND GROUND

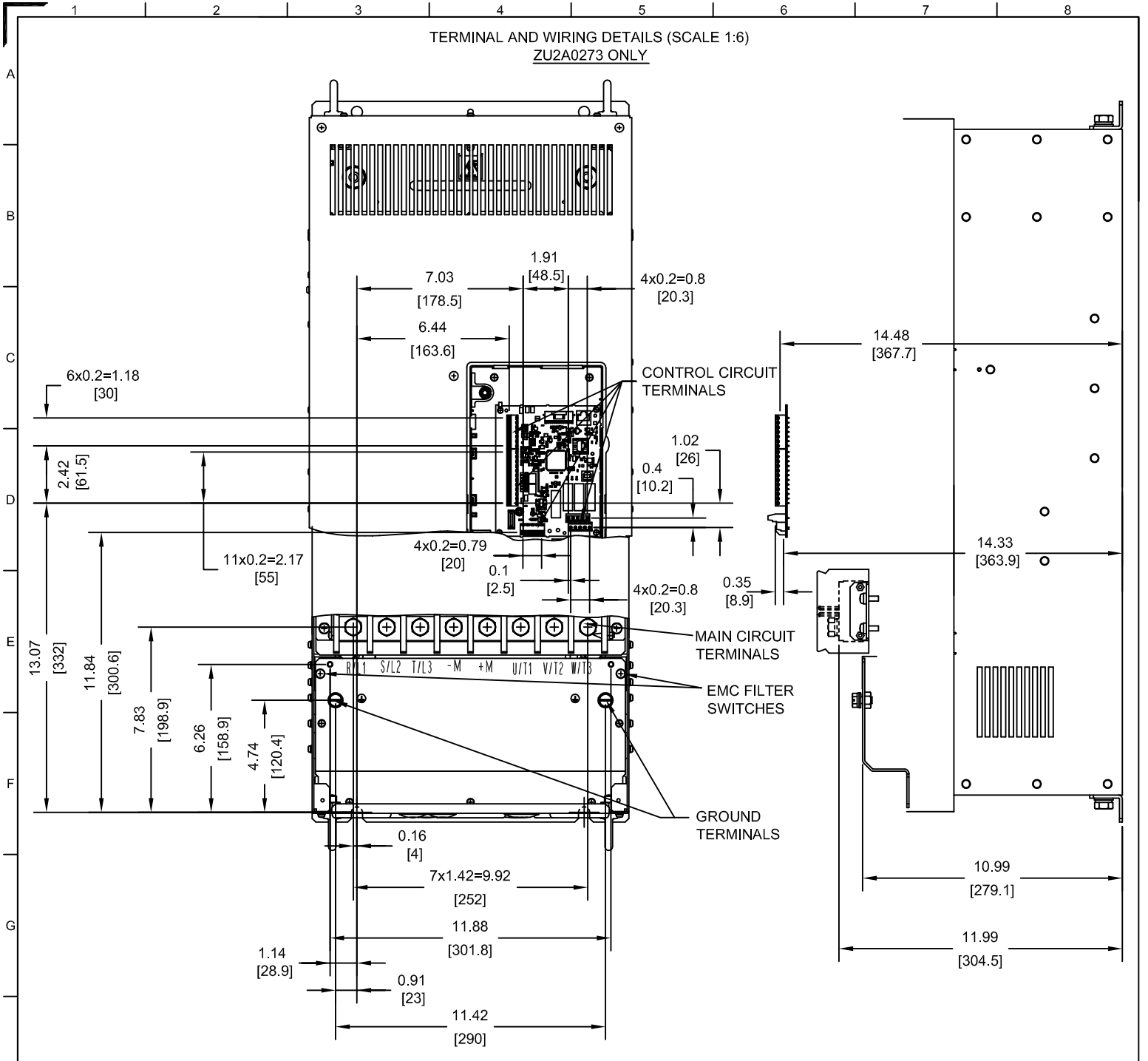
MODEL # CIMR-ZU	TERMINAL SYMBOL	TERMINAL SCREW	CLAMPING TORQUE lb.in.(N.m.)	WIRE RANGE AWG(mm ²)
2A0143 2A0169 2A0211 4A0156 4A0180 4A0240	R/L1, S/L2, T/L3, U/T1, V/T2, W/T3, -M, +M, ⊕	M8	120 TO 133 (13.5 TO 15.0)	6-250MCM (16-125)

NOTE: REFER TO APPLICABLE CODES FOR PROPER WIRE TYPE AND SIZE

FOR ADDITIONAL DETAILS AND SPECIFICATIONS, CONSULT MANUAL

TOLERANCES / REFERENCES:		DRAWN: J. MATTAS	DATE 8-30-11	TITLE: Z1000 DIMENSION DRAWING		
		CHECKED: J. PIOTROWSKI	DATE 10-21-11	FRAME SIZE 6		
THIS DOCUMENT AND INFORMATION CONTAINED IN IT ARE CONFIDENTIAL, AND CANNOT BE COPIED OR DISCLOSED IN WHOLE OR IN PART WITHOUT THE EXPRESS WRITTEN CONSENT OF YASKAWA AMERICA, INC.	TECH: J. BORJA	DATE 9-23-11	NEMA TYPE 1 ENCLOSURE			
	APPROVED: J. CAIRO	DATE 10-17-11	SIZE A	REVISION R00	PAGE 2 of 4	
UNITS: IN[mm]	SCALE: BY VIEW	ORIGINAL DESIGN: -	DATE -	DRAWING #: DD.Z1K.FR6.N1		

TERMINAL AND WIRING DETAILS (SCALE 1:6)
ZU2A0273 ONLY



TERMINAL AND WIRE SPECIFICATIONS FOR
MAIN CIRCUIT AND GROUND

MODEL # CIMR-ZU	TERMINAL SYMBOL	TERMINAL SCREW	CLAMPING TORQUE lb.in.(N.m.)	WIRE RANGE AWG(mm ²)
2A0273	R/L1, S/L2, T/L3, U/T1, V/T2, W/T3, -M, +M	M10	239 TO 266 (27.0 TO 30.0)	1/0-4/0 (55-120)
	⊕	M8	120 TO 133 (13.5 TO 15.0)	6-250MCM (16-125)

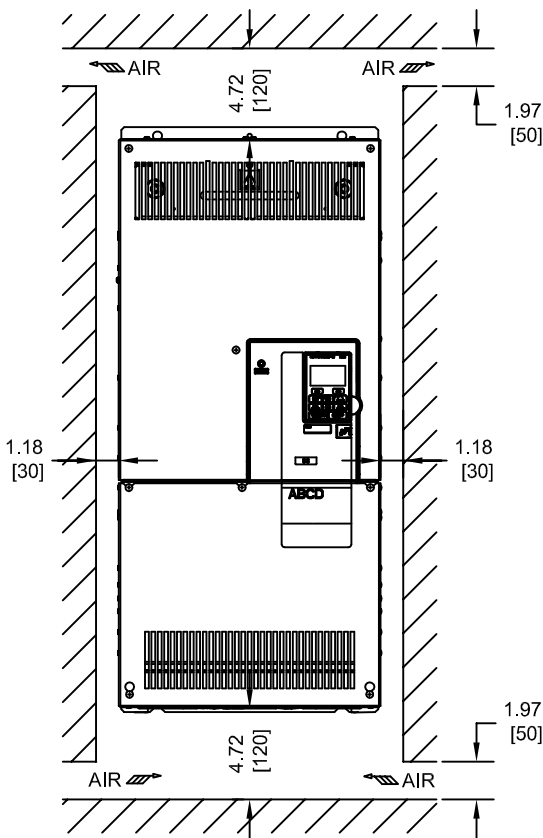
NOTE: REFER TO APPLICABLE CODES FOR PROPER WIRE TYPE AND SIZE

FOR ADDITIONAL DETAILS AND SPECIFICATIONS, CONSULT MANUAL

TOLERANCES / REFERENCES:			DRAWN: J. MATTAS DATE: 8-30-11	TITLE: Z1000 DIMENSION DRAWING FRAME SIZE 6 NEMA TYPE 1 ENCLOSURE 2A0143 - 0273, 4A0156 - 0240		
			CHECKED: J. PIOTROWSKI DATE: 10-21-11	DATE: 9-23-11	REVISION: R00	PAGE: 3 of 4
		TECH: J. BORJA DATE: 9-23-11	DATE: 10-17-11	SIZE: A	DRAWING #: DD.Z1K.FR6.N1	
UNITS: IN[mm]	SCALE: BY VIEW	APPROVED: J. CAIRO DATE: 10-17-11	ORIGINAL DESIGN: -	DATE: -		

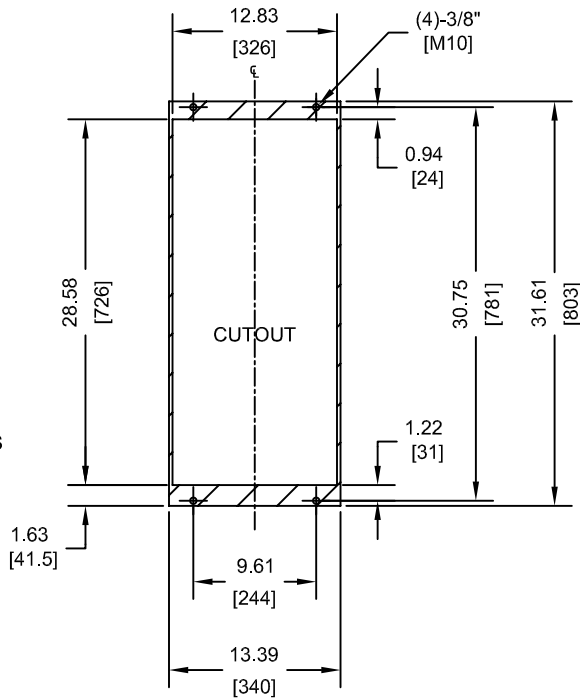
THIS DOCUMENT AND INFORMATION CONTAINED
IN IT ARE CONFIDENTIAL, AND CANNOT BE
COPIED OR DISCLOSED IN WHOLE OR IN PART
WITHOUT THE EXPRESS WRITTEN CONSENT
OF YASKAWA AMERICA, INC.

MINIMUM INSTALLATION CLEARANCES (SCALE 1:10)



NOTE:
FOR SIDE-BY-SIDE MOUNTING
CONSULT MANUAL

PANEL CUTOUT FOR EXTERNAL HEATSINK MOUNTING CONFIGURATION (SCALE 1:15)



NOTES:

1. CUTOUT TOLERANCES:
+/- 0.02IN (0.5MM)
2. EXPOSED HEATSINK DEPTH
D=7.12" MINUS PANEL THICKNESS

FOR ADDITIONAL DETAILS AND SPECIFICATIONS, CONSULT MANUAL

TOLERANCES / REFERENCES:			DRAWN: J. MATTAS 8-30-11	TITLE: Z1000 DIMENSION DRAWING	
			CHECKED: J. PIOTROWSKI 10-21-11	FRAME SIZE 6 NEMA TYPE 1 ENCLOSURE 2A0143 - 0273, 4A0156 - 0240	
		TECH: J. BORJA 9-23-11	DATE: 9-23-11	SIZE: A	REVISION: R00
		APPROVED: J. CAIRO 10-17-11	DATE: 10-17-11	ORIGINAL DESIGN: -	PAGE: 4 of 4
UNITS: IN [mm]	SCALE: BY VIEW	WITHOUT THE EXPRESS WRITTEN CONSENT OF YASKAWA AMERICA, INC.		DRAWING #: DD.Z1K.FR6.N1	